

## **NSQF QUALIFICATION FILE GUIDANCE**

### **CONTACT DETAILS OF THE BODY SUBMITTING THE QUALIFICATION FILE**

**Name and address of submitting body:**

Handicrafts and Carpet Sector Skill Council  
3rd Floor, OCF,  
Plot No. 2, Pocket – 9, Sector – B,  
Vasant Kunj,  
New Delhi – 110070

**Name and contact details of individual dealing with the submission**

**Name:** Ms. Anupama Giri

**Position in the organisation:** CEO

**Address if different from above:** NO

**Tel number(s):** 011-26133165

**E-mail address:** ceo@hcssc.in

**List of documents submitted in support of the Qualifications File**

1. Career Progression of Handicrafts (Ceramics) Sub-Sector
2. List of QP/NOS validating companies
3. Requirement and recommendation letter from Line Ministry
4. Qualification Pack
5. Curriculum
6. Minutes of the meeting of GC Consultation meeting
7. NSDC Human Resource & Skills Requirement in Handloom & Handicraft Sector
8. RFP for development of Occupational Standards
9. Selection process of the Consultants to develop Occupational Standards

## NSQF QUALIFICATION FILE GUIDANCE

### SUMMARY

1	<b>Qualification Title</b>	Bamboo Mat weaver
2	<b>Qualification Code, if any</b>	HCS/Q 8702
3	<b>NCO code and occupation</b>	NCO-2015/7317.0800 Mat Weaver, Bamboo
4	<b>Nature and purpose of the qualification (Please specify whether qualification is short term or long term)</b>	- Qualification pack, To help people get employed in the bamboo product manufacturing sector.
5	<b>Body/bodies which will award the qualification</b>	Handicrafts and Carpet Sector Skill Council (HCSSC)
6	<b>Body which will accredit providers to offer courses leading to the qualification</b>	Handicrafts and Carpet Sector Skill Council (HCSSC)
7	<b>Whether accreditation/affiliation norms are already in place or not , if applicable (if yes, attach a copy)</b>	The accreditation/affiliation would be processed only through the link below: <a href="http://smart.nsdcindia.org/">http://smart.nsdcindia.org/</a>
8	<b>Occupation(s) to which the qualification gives access</b>	Bamboo Mat Weaver
9	<b>Job description of the occupation</b>	A Bamboo Mat Weaver is the one who weaves various types of Bamboo Mats using a hand operated loom. A Bamboo Mat Weaver can weave basic weaves- Plain and Twill, using Bamboo Sticks as weft and yarns as warp on a hand operated loom. The job requires the Weaver to have the skills to attach the warp on the loom and weave the basic weaves on the loom as per pattern or design provided.
10	<b>Licensing requirements</b>	N/A
11	<b>Statutory and Regulatory requirement of the relevant sector (documentary evidence to be provided)</b>	The said job role is required in the respective sector (evidence attached in Annexure 3)
12	<b>Level of the qualification in the NSQF</b>	3
13	<b>Anticipated volume of training/learning required to complete the qualification</b>	300{(NOSs + Bridge module = 240)+ (Entrepreneurship and Soft Skills + Digital Literacy = 60)}
14	<b>Indicative list of training tools required to deliver this qualification</b>	Laptop, white board, marker, projector, PPTs, Handbook, Bamboo splits, hand saw, measuring tape, thickness measuring tool, moisture tester,

## NSQF QUALIFICATION FILE GUIDANCE

		Protective gears like goggles, mask, gloves, Cleaning tools, electricity tester, accident report sheet, bamboo silvers, threads for twinning, scissors, trimmer, Glue, dry storage area, racks for storage, trimming tools, scissors, varnish, sprayer, brush, thinner, pesticides	
15	<b>Entry requirements and/or recommendations and minimum age</b>	Basic literacy, preferably 5th class pass	
16	<b>Progression from the qualification (Please show Professional and academic progression)</b>	Master Weaver	
17	<b>Arrangements for the Recognition of Prior learning (RPL)</b>	A 3-day RPL program has been devised to certify the trainees.	
18	<b>International comparability where known (research evidence to be provided)</b>	N/A	
19	<b>Date of planned review of the qualification.</b>	2020	
20	<b>Formal structure of the qualification</b>		
	<b>Mandatory components</b>		
	<b>Title of component and identification code/NOSs/Learning outcomes</b>	<b>Estimated size (learning hours)</b>	<b>Level</b>
(i)	<b>HCS/N 8705 Carry out basic pre-loom operations: Denting and attaching the warp on the loom</b>	<b>50</b>	<b>3</b>

## NSQF QUALIFICATION FILE GUIDANCE

(ii)	<b>HCS/N 8706 Carry out basic weaving operations: Shedding/ Picking/ Battening to weave mats comprising of basic weaves- Plain and Twill using hand operated loom</b>	<b>50</b>	<b>3</b>
(iii)	<b>HCS/N 8707 Contribute to achieve quality in bamboo mat weaving</b>	<b>70</b>	<b>3</b>
(iv)	<b>HCS/N 9908 Working in a team</b>	<b>20</b>	<b>3</b>
(v)	<b>HCS/N 9912 Maintain work area and tools</b>	<b>20</b>	<b>3</b>
(vi)	<b>HCS/N 9913 Maintain health, safety and security at workplace</b>	<b>20</b>	<b>3</b>

## NSQF QUALIFICATION FILE GUIDANCE

---

<b>Total</b>	<b>230</b>	
--------------	------------	--

## NSQF QUALIFICATION FILE GUIDANCE

### SECTION 1 ASSESSMENT

21	<p><b>Body/Bodies which will carry out assessment:</b></p> <p>The assessment bodies affiliated to the Handicrafts and Carpet Sector Skill Council will carry out the assessment.</p> <ul style="list-style-type: none"><li>• Rational Multi Skills (RMS)</li><li>• Trendsetter Skill Assessors</li><li>• CEE Vision Technologies Pvt. Ltd.</li><li>• Cindrel Technologies Private Limited</li><li>• NICE Educational &amp; Welfare Trust</li></ul>
22	<p><b>How will RPL assessment be managed and who will carry it out?</b></p> <p>RPL will be based on the same approved Qualification Pack and Assessment Criteria mentioned in the Qualification Pack. The process of RPL assessment is under development.</p>
23	<p><b>Describe the overall assessment strategy and specific arrangements which have been put in place to ensure that assessment is always valid, reliable and fair and show that these are in line with the requirements of the NSQF.</b></p> <p>The assessment is managed by the assessment agency using the question bank approved by the sector skill council which has both the theory and practical questions, the questions are then divided into many different sets so that all students don't get the same questions once the assessment is done the result is compiled and sent to the sector skill council .The NSQF level 2 and 3 qualifications has a passing marks of 50% and NSQF level 4 and above has 70% as passing marks.</p>

## NSQF QUALIFICATION FILE GUIDANCE

### ASSESSMENT EVIDENCE

<b>Assessment Criteria</b>	
<b>Job Role</b>	<b>Bamboo Mat Weaver</b>
<b>Qualification Pack</b>	<b>HCS/Q8702, v1.0</b>
<b>Sector Skill Council</b>	<b>Handicrafts and Carpet</b>

<b>Sr. No.</b>	<b>Guidelines for Assessment</b>
1	Criteria for assessment for each Qualification Pack will be created by the Sector Skill Council. Each Performance Criteria (PC) will be assigned marks proportional to its importance in NOS. SSC will also lay down proportion of marks for Theory and Skills Practical for each PC.
2	The assessment for the theory part will be based on knowledge bank of questions created by the SSC.
3	Individual assessment agencies will create unique question papers for theory part for each candidate at each examination/training center (as per assessment criteria below)
4	Individual assessment agencies will create unique evaluations for skill practical for every student at each examination/training center based on this criteria
5	To pass the Qualification Pack , every trainee should score a minimum of 70% in every NOS
6	In case of successfully passing only certain number of NOS's, the trainee is eligible to take subsequent assessment on the balance NOS's to pass the Qualification Pack.

		<b>Total Marks (600)</b>	<b>Out of</b>	<b>Theory</b>	<b>Skills practical</b>
1. HCS/N 8705 (Carry out basic pre-loom operations: Denting and attaching the warp on the loom)	PC1. Identify the parts of the hand operated loom and understand their functioning	<b>100</b>	10	4	6
	PC2. Analyze & interpret the given design (plain or twill weave) which needs to be woven & the type of raw material that is required		6	3	3
	PC3. Select and check appropriate materials- bamboo sticks and yarns, required for weaving the fabric as per the given specifications		4	1	3
	PC4. Conform to product quality standards		3	1	2

## NSQF QUALIFICATION FILE GUIDANCE

	PC5. Check with in-charge /others when unsure of new product details		3	1	2
	PC6. Minimise and dispose the waste materials in the approved manner		3	1	2
	PC7. Carry out operations at a rate which maintains workflow		6	3	3
	PC8. Leave work area safe and secure when work is complete		3	2	1
	PC9. Understand basic or plain drafting		8	4	4
	PC10. Carry out drafting- drawing the warp threads into heald eyelets using the hook as per the given specifications.		12	5	7
	PC11. Detect, analyse and rectify faults while drafting		6	2	4
	PC12. Gradually knot the threads after drafting a set of ends to avoid mistakes in drafting		3	1	2
	PC13. Draw the warp threads in the warped beam through the reed dents as per the given specifications		4	2	2
	PC14. Maintain the reed hook to ensure smooth functioning		3	1	2
	PC15. Attach the warp rolled beam on the loom, in order to keep the loom ready to commence weaving operations		8	3	5
	PC16. Knot the warp threads uniformly to the rod attached to		7	3	4



## NSQF QUALIFICATION FILE GUIDANCE

	the breast beam/fabric beam				
	PC17. Maintain the correct tension of the warp threads to prepare the loom for weaving		4	1	3
	PC18. Analyze and maintain the tension of the warp threads uniformly by beating and inserting dummy weft		4	1	3
	PC19. Respond appropriately incase of any errors or faults in the warp and other pre-weaving operations and take corrective measures		3	1	2
	<b>TOTAL</b>		<b>100</b>	<b>40</b>	<b>60</b>
2. HCS/N 7806 (Carry out basic weaving operations: Shedding/Picking/Battening to weave mats comprising of basic weaves- Plain and Twill on hand operated loom)	PC1. Select the appropriate coloured bamboo sticks for insertion as wefts	<b>100</b>	8	4	4
	PC2. Ask questions to obtain more information on tasks when the instructions you have are unclear		5	2	3
	PC3. Use the correct tools and materials		3	2	1
	PC4. Check that the materials to be used are free from faults, incase of any report them		5	2	3
	PC5. Use the pedal to check if the shed formed is appropriate		4	1	3
	PC6. Carry-out the primary weaving operation of Shedding		7	2	5
	PC7. Carry-out the primary weaving operation of Picking		8	3	5
	PC8. Carry-out the primary weaving		7	2	5

## NSQF QUALIFICATION FILE GUIDANCE

	operation of Battening				
	PC9. Carry out beating uniformly		3	1	2
	PC10. Carry-out the secondary weaving operations of Take-up		5	2	3
	PC11. Carry-out the secondary weaving operations of Let-off		5	2	3
	PC12. Trim the edges of the woven mat evenly		3	1	2
	PC13. Reduce wastage and maintain quality while cutting to get desired finishing		3	1	2
	PC14. Use the designated measuring tool for measurement of mat		3	2	1
	PC15. Roll the mat, tag and store in a dry place		4	2	2
	PC16. Conform to company quality standards		7	3	4
	PC17. Report any damaged work to the responsible person		5	2	3
	PC18. Leave work area safe and secure when work is complete free from hazards		5	2	3
	PC19. Inspect the woven mats as per the specifications provided		5	2	3
	PC20. Perform all weaving-related operations with precision & accuracy		5	2	3
		<b>TOTAL</b>	<b>100</b>	<b>40</b>	<b>60</b>
3. HCS/N 7807 (Contribute to achieve quality in bamboo mat weaving)	PC1. Identify and use raw materials as per the specifications provided	<b>100</b>	10	3	7
	PC2. Take the		8	2	6

## NSQF QUALIFICATION FILE GUIDANCE

	necessary action when materials do not conform to quality standards				
	PC3. Report and replace identified faulty materials and component parts which do not meet specification		6	2	4
	PC4. Identify modifiable defects and rework on them		10	4	6
	PC5. Carry out work safely and at a rate which maintains work flow		6	2	4
	PC6. Report to the responsible person when the work flow of other production areas disrupts work		8	4	4
	PC7. Carry out quality checks at specified intervals according to instructions		8	4	4
	PC8. Apply the allowed tolerances		10	4	6
	PC9. Identify faults and take appropriate action for rectification		10	4	6
	PC10. Make adjustments promptly to ensure the hand-woven mat matches the specification		10	4	6
	PC11. Fault-find materials and components for stained, damage and incorrectly made-up component parts		8	4	4
	PC14. Maintain the required productivity and quality levels		6	3	3
		<b>TOTAL</b>	<b>100</b>	<b>40</b>	<b>60</b>
4. HCS/N9908 (Working in	PC1. Be accountable	<b>100</b>	12	4	8

## NSQF QUALIFICATION FILE GUIDANCE

a team)	to one's own role in whole process of developing product				
	PC2. Perform all roles with full responsibility	10	3	7	
	PC3. Be effective and efficient at workplace	10	3	7	
	PC4. Properly communicate about organisation's policies	8	4	4	
	PC5. Talk politely with other team members and colleagues	10	3	7	
	PC6. Adjust in different work situations	10	3	7	
	PC7. Give due importance to others' point of view	10	3	7	
	PC8. Avoid conflicting situations	10	2	8	
	PC9. Develop new ideas for work procedures	8	2	6	
	PC10. Improve upon the existing techniques to increase process efficiency	12	2	10	
	<b>TOTAL</b>	<b>100</b>	<b>29</b>	<b>71</b>	
5. HCS/N 9912 (Maintain work area and tools)	PC1. Handle materials and tools safely and correctly	<b>100</b>	8	2	6
	PC2. Use materials to minimize waste		10	3	7
	PC3. Maintain a clean and hazard free working area		10	3	7
	PC4. Maintain the tools used for stick making		8	2	6
	PC5. Carry out maintenance and/or cleaning within one's responsibility		10	3	7
	PC6. Report damaged tools and		12	4	8

## NSQF QUALIFICATION FILE GUIDANCE

	materials				
	PC7. Work in a comfortable position with correct posture		10	3	7
	PC8. Dispose of waste safely in designated location		12	4	8
	PC9. Store tools safely after use		10	3	7
	PC10. Carry out cleaning according to schedules and limits of responsibility		10	3	7
		<b>TOTAL</b>	<b>100</b>	<b>30</b>	<b>70</b>
6. HCS/N 9913 (Maintain health, safety and security at workplace)	PC1. Comply with health and safety related instructions applicable to the workplace	<b>100</b>	8	2	6
	PC2. Use and maintain personal protective equipment as per protocol		8	2	6
	PC3. Carry out own activities in line with approved guidelines and procedures		8	2	6
	PC4. Maintain a healthy lifestyle and guard against dependency on intoxicants		8	2	6
	PC5. Follow environment management system related procedures		6	2	4
	PC6. Store materials and tools in line with manufacturer's and organisational requirements		5	2	3
	PC7. Safely handle and move waste and debris		4	1	3
	PC8. Minimize health and safety risks to self and others due to own actions		6	2	4

## NSQF QUALIFICATION FILE GUIDANCE

	PC9. Seek clarifications from supervisors or other authorized personnel in case of perceived risks		4	1	3
	PC10. Monitor the workplace and work processes for potential risks and threats		4	1	3
	PC11. Carry out periodic walk-through to keep work area free from hazards and obstructions, if assigned		5	2	3
	PC12. Report hazards and potential risks/ threats to supervisors or other authorized personnel		7	3	4
	PC13. Participate in mock drills/ evacuation procedures organised at the workplace		5	2	3
	PC14. Undertake first aid, fire fighting and emergency response training, if asked		6	2	4
	PC15. Take action based on instructions in the event of fire, emergencies or accidents		8	2	6
	PC16. Follow organisation evacuation procedures		8	2	6
		<b>TOTAL</b>	<b>100</b>	<b>30</b>	<b>70</b>

## NSQF QUALIFICATION FILE GUIDANCE

### SECTION 2

#### 25. EVIDENCE OF LEVEL

##### OPTION A

Title/Name of qualification/component: Bamboo mat weaver		Level: 3	
NSQF Domain	Outcomes of the Qualification/Component	How the outcomes relates to the NSQF level descriptors	NSQF Level
Process	<p>The Bamboo Mat Weaver carries out a job which requires limited range of activities carried out in a routine and is predictable which in this case are around weaving bamboo mats using hand operated looms. The examples for the same include tasks carried out to do the following</p> <ul style="list-style-type: none"> <li>• carry out basic pre-loom operations such as denting and attaching the warp on the loom</li> <li>• carry out basic weaving operations including Shedding, Picking and Battening to weave mats comprising of basic weaves-plain &amp; twill using hand operated loom.</li> </ul>	The Qualification is at level 3 since all work is as per routine and there is no clear choice.	3
Professional knowledge	<p>The Bamboo Mat Weaver needs basic facts, process and principle applied in trade of employment which in this case is weaving of bamboo mats as per specifications using hand operated looms.</p> <ul style="list-style-type: none"> <li>• the basics of operating a hand operated</li> </ul>	It is level 3 as the Bamboo Mat Weaver needs understanding of weaving and also to apply the same	3

## NSQF QUALIFICATION FILE GUIDANCE

Title/Name of qualification/component: Bamboo mat weaver			Level: 3
NSQF Domain	Outcomes of the Qualification/Component	How the outcomes relates to the NSQF level descriptors	NSQF Level
	loom <ul style="list-style-type: none"> <li>the processes involved in the pre-loom operations</li> <li>the technique of weaving basic weaves- Plain and Twill</li> <li>correct ways of handling the loom and materials</li> </ul>		
Professional skill	The skills required for the job involve recall and demonstration of practical skill, which is routine and repetitive in narrow range of application. Examples: <ul style="list-style-type: none"> <li>Choose the correct treatment vessel and chemicals for bleaching/dyeing/finishing of the bamboo craft materials as per specification.</li> <li>Maintain the correct tension of the warp threads to prepare the loom for weaving.</li> <li>Select the appropriate coloured bamboo sticks for carry-out the primary weaving operations.</li> <li>insertion as wefts</li> </ul>	Factual Knowledge of Field of knowledge of study is not required for this level, therefore it is level 3.	3
Core skill	The Bamboo Mat Weaver requires communication skills written and oral, with	Basic oral and written communication is required.	3



## NSQF QUALIFICATION FILE GUIDANCE

Title/Name of qualification/component: Bamboo mat weaver			Level: 3
NSQF Domain	Outcomes of the Qualification/Component	How the outcomes relates to the NSQF level descriptors	NSQF Level
	<p>minimum required clarity, skill of basic arithmetic and algebraic principles including understanding of basic financial transactions.</p> <p>These are required for the following tasks:</p> <ul style="list-style-type: none"> <li>• analyze &amp; interpret the given design (plain or twill weave) which needs to be woven &amp; the type of raw material that is required</li> <li>• select and check appropriate materials- bamboo sticks and yarn required for weaving the fabric as per the given specifications</li> <li>• respond appropriately in case of any errors or faults in the warp and other pre-weaving operations</li> <li>• apply the allowed tolerances</li> </ul>		
Responsibility	<p>The Bamboo Mat Weaver works largely on instruction from supervisor and laid down procedures. The weaver also has some responsibility for work including for delivery on time and as per schedules standards, but beyond that is not accountable</p> <p>Examples:</p> <ul style="list-style-type: none"> <li>• take the necessary action when materials do not conform to quality</li> </ul>	Given the limited scope of responsibility for own learning and work this is at Level 3.	3

## NSQF QUALIFICATION FILE GUIDANCE

Title/Name of qualification/component: Bamboo mat weaver		Level: 3	
NSQF Domain	Outcomes of the Qualification/Component	How the outcomes relates to the NSQF level descriptors	NSQF Level
	<ul style="list-style-type: none"><li>standards</li><li>carry out work safely and at a rate which maintains work flow.</li></ul>		

## NSQF QUALIFICATION FILE GUIDANCE

### SECTION 3 EVIDENCE OF NEED

26	<b>What evidence is there that the qualification is needed? What is the estimated uptake of this qualification and what is the basis of this estimate?</b>		
	<p><b>Basis</b></p> <p><b>Need of the qualification</b></p> <p><b>Industry Relevance</b></p> <p><b>Usage of the qualification</b></p> <p><b>Estimated uptake</b></p>	<p><b>In case of SSC</b></p> <p>While collecting data from the companies for the occupational map, we also took feedback from industry, which was collected with respect to roles for which qualification packs development, was to be prioritized. This was largely based on volume of people required, quantitative and qualitative shortfall which the Industry feels they face. Governing council of HCSSC gave final approval and endorsement for the same.</p> <p>This job role is required in the specific industry and thus is also validated by organizations of the industry – the list of which is attached below</p> <p>It would used for training purposes to skill and up-skill candidates.</p> <p>It is estimated that currently 75,000 Bamboo Mat weavers are engaged; of which the estimated uptake would be 52,500 of this qualification. The numbers have been</p>	<p><b>In case of other Awarding Bodies (Institutes under Central Ministries and states departments)</b></p>

## NSQF QUALIFICATION FILE GUIDANCE

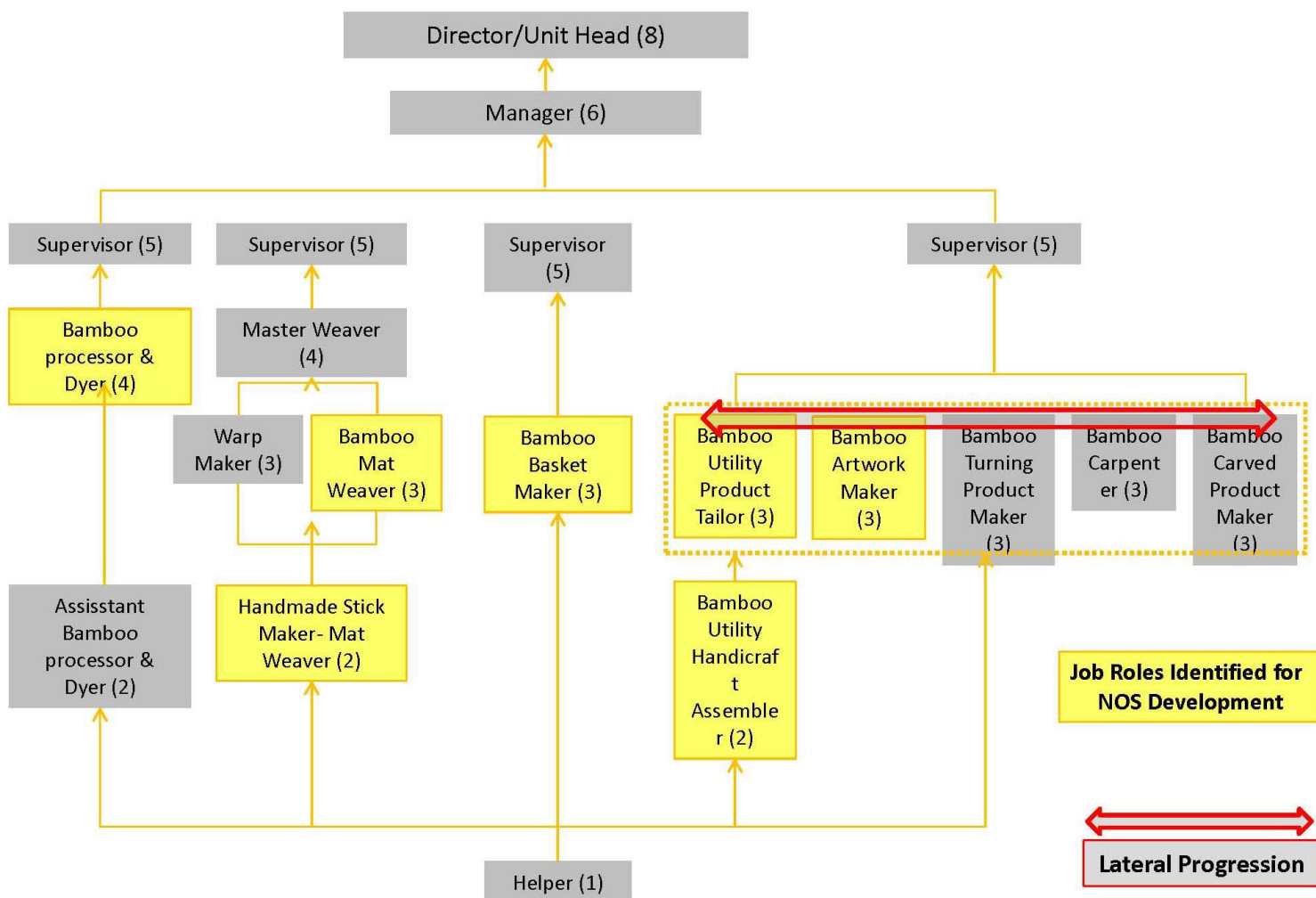
	<p>estimated based on industry consultations, analysis of existing reports such as Skills Gap analysis Reports.</p>
<p><b>27</b></p>	<p><b>Recommendation from the concerned Line Ministry of the Government/Regulatory Body. To be supported by documentary evidences</b>            Recommendation received from the office of Development Commissioner (Handicrafts), Ministry of Textiles, Govt. Of India (evidence attached in Annexure 3).</p>
<p><b>28</b></p>	<p><b>What steps were taken to ensure that the qualification(s) does (do) not duplicate already existing or planned qualifications in the NSQF? Give justification for presenting a duplicate qualification</b>            NSDC list of Approved and Under-Development QPs was checked prior to commissioning the work.</p>
<p><b>29</b></p>	<p><b>What arrangements are in place to monitor and review the qualification(s)? What data will be used and at what point will the qualification(s) be revised or updated? Specify the review process here</b></p> <ul style="list-style-type: none"> <li>• Agencies have been appointed by the SSC to interact with training providers to gather feedback in implementation.</li> <li>• Monitoring of results of assessments</li> <li>• Employer feedback will be sought post-placement</li> <li>• A formal review is scheduled in two year time i.e. 2020</li> </ul>

**SECTION 4**  
**EVIDENCE OF PROGRESSION**

<b>30</b>	<p><b>What steps have been taken in the design of this or other qualifications to ensure that there is a clear path to other qualifications in this sector?</b></p> <ol style="list-style-type: none"> <li>1. Vertical mobility options have been articulated in the occupational map</li> <li>2. Vertical mobility option is of a Master Weaver</li> </ol>
-----------	---

**Career Progression:**

**Bamboo Handicrafts Subsector: Detailed Career progression**



## NSQF QUALIFICATION FILE GUIDANCE

### List of companies validated the QP

S. No	Name of Organisation	Contact Person	Employee Size
1	Tripura Bamboo Mission, Tripura	Mr. V. George Jenner, IFS	Large
2	Tripura Cottage Industries, Tripura	Mr. Manas Debnath	Large
3	Medni crafts Producer Company Ltd, Medinipur (WB)	Mr. Nimesh Kumar Barman	Large
4	Sahaj, Gujarat	Mr. Jabeen Jambhughidawala	Large
5	Benu (Bamboo Enterprises United), Tripura	Mr. Manna Roy	Large
6	Kalika Handicrafts Society, Tripura	Mr. Gauranga Debnath	Large
7	Parivartan, Jharkhand	Mr. Sudeep Saha	Large
8	NRDC, Odisha	Mr. P. K. Mohapatra	Large
9	Contemporary Bamboo Craft Society, Tripura	Mr. Anath Bandhu Sutradhar	Large
10	Gairing Society, Tripura	Mr. Tamash Kangdai	Large
11	Broocklieen, Kerela	Mr. Ashok Kumar. P	Large
12	Umathen Women Weaving and Handicraft Cooperative Society, Manipur	Mrs. M. Ibechoubi Leima	Large
13	Thongjao Rural Upliftment Society, Manipur	Ms. S. Kamala Devi	Large
14	Sristi Crafts & Stores, Tripura	Ms. Nandita Chakraborty	Medium
15	Modern Handicrafts, Tripura	Mr. Manoj Debnath	Medium
16	Mahamaya Handicrafts, Tripura	Mr. Badal Debnath	Medium
17	Chakraborty Handicrafts, Tripura	Mr. Tarun Chakraborty	Medium
18	Natural Weaves & Crafts, Tripura	Ms. Swapna Debnath	Medium
19	Nirmaan Fabrics, Guwahati	Mr. Bapan Sarkar	Medium
20	SHADE, AP	Ms. Sowjanya. P	Medium
21	SHARE, AP	Mr. P. Sudheer Kumar	Medium
22	Orissa Palli Bikash Pratisthan(OPBP), Odisha	Mr. Ojha	Medium
23	Kedar Dhar Industries, Tripura	Mr. Kallol Dhar	Medium
24	MaaKali Handicrafts, Tripura	Mr. Bhajan Sharma	Medium
25	Pioneer Bamboo Craft Society, Tripura	Mr. Bijoy Sutradhar	Medium
26	Women Welfare Society, tripura	Ms. Geeta Chakraborty	Medium
27	Swami Jogananda SHG , Agartala	Mrs. Jyotsna Debnath	Small
28	Creative weaving & Traditional Dresses Unit, Dimapur	Ms Aku Kaurinta Zeliang	Small
29	Art Core, Guwahati	Mr. Peburen Sarmah	Small
30	IndiStore, New Delhi	Ms. Sangeeta Sen	Small

## NSQF QUALIFICATION FILE GUIDANCE

31	Archana Cottage Industries, Tripura	Mr. Prabhod Debnath	Small
32	Bamanchara Nandakirshore Para Craft Producer Group, Tripura	Ms. Chitrita Choudhury	Small
33	Bishwakarama Kalakendra, tripura	Mr. Chunilal Debnath	Small
34	Das Enterprise, Tripura	Mr. Atanu Das	Small
35	Juri Craft Producer Grp, Tripura	Ms. Priyabrata Chabraborty	Small
36	Malancha Craft Producer Grp, Tripura	Ms. Ruma Gope (Barman)	Small
37	Matabari Craft Producer Grp, Tripura	Ms. Suman Sutradhar	Small
38	Rangitilla Craft Producer Grp, Tripura	Mr. Abhijit Sutradhar	Small
39	Sanchay Craft Producer Grp, Tripura	Ms. Mina Rani Das	Small
40	Srijoni, Tripura	Mr. Mithun Dey	Small
41	Uday Craft Producer Grp, Tripura	Ms. Sikha Das	Small
42	Ujjayanta Craft Producer Grp, Tripura	Ms. Purnima Deb(Datta)	Small