

## **NSQF QUALIFICATION FILE GUIDANCE**

### **CONTACT DETAILS OF THE BODY SUBMITTING THE QUALIFICATION FILE**

**Name and address of submitting body:**

Handicrafts and Carpet Sector Skill Council  
3rd Floor, OCF,  
Plot No. 2, Pocket – 9, Sector – B,  
Vasant Kunj,  
New Delhi – 110070

**Name and contact details of individual dealing with the submission**

**Name:** Ms. Anupama Giri

**Position in the organisation:** CEO

**Address if different from above:** NO

**Tel number(s):** 011-26133165

**E-mail address:** ceo@hcssc.in

**List of documents submitted in support of the Qualifications File**

1. Career Progression of Handicrafts (Ceramics) Sub-Sector
2. List of QP/NOS validating companies
3. Requirement and recommendation letter from Line Ministry
4. Qualification Pack
5. Curriculum
6. Minutes of the meeting of GC Consultation meeting
7. NSDC Human Resource & Skills Requirement in Handloom & Handicraft Sector
8. RFP for development of Occupational Standards
9. Selection process of the Consultants to develop Occupational Standards

## NSQF QUALIFICATION FILE GUIDANCE

### SUMMARY

1	<b>Qualification Title</b>	Bamboo Basket Maker
2	<b>Qualification Code, if any</b>	HCS/Q 8704
3	<b>NCO code and occupation</b>	NCO-2015/7317.0700 Basket Maker
4	<b>Nature and purpose of the qualification (Please specify whether qualification is short term or long term)</b>	Qualification pack, To prepare people to work in the bamboo product manufacturing sector
5	<b>Body/bodies which will award the qualification</b>	Handicrafts and Carpet Sector Skill Council (HCSSC)
6	<b>Body which will accredit providers to offer courses leading to the qualification</b>	Handicrafts and Carpet Sector Skill Council (HCSSC)
7	<b>Whether accreditation/affiliation norms are already in place or not , if applicable (if yes, attach a copy)</b>	The accreditation/affiliation would be processed only through the link below: <a href="http://smart.nsdcindia.org/">http://smart.nsdcindia.org/</a>
8	<b>Occupation(s) to which the qualification gives access</b>	Bamboo basket making
9	<b>Job description of the occupation</b>	A bamboo Basket Maker is the one who prepares the bamboo slivers from bamboo split and makes the basket of desired shape & size by interlacing the slivers.
10	<b>Licensing requirements</b>	N/A
11	<b>Statutory and Regulatory requirement of the relevant sector (documentary evidence to be provided)</b>	The said job role is required in the respective sector (evidence attached in Annexure 3)
12	<b>Level of the qualification in the NSQF</b>	3
13	<b>Anticipated volume of training/learning required to complete the qualification</b>	300 {(NOSs + Bridge module = 240)+(Entrepreneurship + Soft Skills= 60)}
14	<b>Indicative list of training tools required to deliver this qualification</b>	Laptop, white board, marker, projector, PPTs, Handbook, Bamboo splits, hand saw, measuring tape, thickness measuring tool, moisture tester, Protective gears like goggles, mask, gloves. Cleaning tools, electricity tester, accident report sheet, bamboo silvers, threads for twinning, scissors, trimmer, Glue, dry storage area, racks for storage, trimming tools, scissors,

## NSQF QUALIFICATION FILE GUIDANCE

		varnish, sprayer, brush, thinner, pesticides	
15	<b>Entry requirements and/or recommendations and minimum age</b>	Basic literacy, preferably 5th class pass	
16	<b>Progression from the qualification (Please show Professional and academic progression)</b>	Supervisor	
17	<b>Arrangements for the Recognition of Prior learning (RPL)</b>	A 3-day RPL program has been devised to certify the trainees.	
18	<b>International comparability where known (research evidence to be provided)</b>	N/A	
19	<b>Date of planned review of the qualification.</b>	2020	
20	<b>Formal structure of the qualification</b>		
	<b>Mandatory components</b>		
	<b>Title of component and identification code/NOSs/Learning outcomes</b>	<b>Estimated size (learning hours)</b>	<b>Level</b>
(i)	<b>HCS/N8711 Carry out preparation of bamboo slivers</b>	<b>45</b>	<b>3</b>
(ii)	<b>HCS/N8712 Carry out weaving &amp; twining of bamboo slivers to achieve the final product as per requirement</b>	<b>55</b>	<b>3</b>

## NSQF QUALIFICATION FILE GUIDANCE

<b>(iii)</b>	<b>HCS/N8713 Carry out finishing, varnishing, drying &amp; storage of bamboo basket</b>	<b>40</b>	<b>3</b>
<b>(iv)</b>	<b>HCS/N 8714 Contribute to achieve quality in bamboo basket making</b>	<b>30</b>	<b>3</b>
<b>(v)</b>	<b>HCS/N 9908 Working in a team</b>	<b>18</b>	<b>3</b>
<b>(vi)</b>	<b>HCS/N 9912 Maintain work area and tools</b>	<b>18</b>	<b>3</b>
<b>(vii)</b>	<b>HCS/N 9913 Maintain health, safety and security at workplace</b>	<b>24</b>	<b>3</b>

## NSQF QUALIFICATION FILE GUIDANCE

---

<b>Total</b>	<b>230</b>	
--------------	------------	--

## NSQF QUALIFICATION FILE GUIDANCE

### SECTION 1 ASSESSMENT

21	<p><b>Body/Bodies which will carry out assessment:</b></p> <p>The assessment bodies affiliated to the Handicrafts and Carpet Sector Skill Council will carry out the assessment.</p> <ul style="list-style-type: none"><li>• Rational Multi Skills (RMS)</li><li>• Trendsetter Skill Assessors</li><li>• CEE Vision Technologies Pvt. Ltd.</li><li>• Cindrel Technologies Private Limited</li><li>• NICE Educational &amp; Welfare Trust</li></ul>
22	<p><b>How will RPL assessment be managed and who will carry it out?</b></p> <p>RPL will be based on the same approved Qualification Pack and Assessment Criteria mentioned in the Qualification Pack. The process of RPL assessment is under development.</p>
23	<p><b>Describe the overall assessment strategy and specific arrangements which have been put in place to ensure that assessment is always valid, reliable and fair and show that these are in line with the requirements of the NSQF.</b></p> <p>The assessment is managed by the assessment agency using the question bank approved by the sector skill council which has both the theory and practical questions, the questions are then divided into many different sets so that all students don't get the same questions once the assessment is done the result is compiled and sent to the sector skill council .The NSQF level 2 and 3 qualifications has a passing marks of 50% and NSQF level 4 and above has 70% as passing marks.</p>

## NSQF QUALIFICATION FILE GUIDANCE

### ASSESSMENT EVIDENCE

<b>Assessment Criteria</b>	
<b>Job Role</b>	<b>Bamboo Basket Maker</b>
<b>Qualification Pack</b>	<b>HCS/Q8704, v1.0</b>
<b>Sector Skill Council</b>	<b>Handicrafts and Carpet</b>

<b>Sr. No.</b>	<b>Guidelines for Assessment</b>
1	Criteria for assessment for each Qualification Pack will be created by the Sector Skill Council. Each Performance Criteria (PC) will be assigned marks proportional to its importance in NOS. SSC will also lay down proportion of marks for Theory and Skills Practical for each PC.
2	The assessment for the theory part will be based on knowledge bank of questions created by the SSC.
3	Individual assessment agencies will create unique question papers for theory part for each candidate at each examination/training center (as per assessment criteria below)
4	Individual assessment agencies will create unique evaluations for skill practical for every student at each examination/training center based on this criteria
5	To pass the Qualification Pack , every trainee should score a minimum of 70% in every NOS

		<b>Total Marks (700)</b>	<b>Out of</b>	<b>Theory</b>	<b>Skills Practical</b>
1. HCS/N 8711 (Carry out preparation of bamboo slivers)	PC1. Appropriately use the Hand Saw.	<b>100</b>	7	2	5
	PC2. Make the bamboo sliver by handling the bamboo split in the right manner.		7	2	5
	PC3. Apply appropriate pressure on the bamboo split by using the hand saw to get the desired thickness of Bamboo sliver.		7	3	4
	PC4. Make the Bamboo sliver of the desired size from the splits.		7	3	4
	PC5. Measure & maintain the uniformity of the sliver to be achieved.		7	3	4
	PC6. Minimise and dispose the waste materials in the approved manner.		7	3	4
	PC7. Carry out operations at a rate which maintains workflow.		7	3	4
	PC8. Respond appropriately incase of any errors or faults in the bamboo and other operations.		5	2	3
	PC9. Leave work area safe and secure when work is complete.		7	3	4
	PC10. Maintain the sharpness of handsaw.		7	3	4

## NSQF QUALIFICATION FILE GUIDANCE

	PC11. Take safety precautions while drawing out the sliver.		7	3	4
	PC12. Identify and segregate the usable and the disposable bamboo slivers based on width, thickness, strength and colour.		5	2	3
	PC13. Ensure uniform and complete drying.		5	2	3
	PC14. Minimise and dispose the waste materials in the approved manner.		5	2	3
	PC15. Take appropriate amount (weight/number of pieces as per market demand) of bamboo slivers from the bulk lot.		5	2	3
	PC16. Undertake precautions while storage to avoid moisture.		5	2	3
		<b>TOTAL</b>	<b>100</b>	<b>40</b>	<b>60</b>
2. HCS/N 8712 (Carry out weaving & twining of bamboo slivers to achieve the final product as per requirement)	PC1. Take specific type (based on width & length) of bamboo slivers suitable for preparing the two dimensional base structure.	<b>100</b>	7	2	5
	PC2. Plan out the base & fix it (specifically for round base)to obtain a rigid structure.		7	2	5
	PC3. Ensure that the base structure is fixed in a proper manner before weaving bamboo slivers on to the base structure.		7	3	4
	PC4. Make the two dimensional Bamboo sliver base according to required design & pattern.		7	3	4
	PC5. Ask questions to obtain more information on tasks when the instructions you have are unclear.		5	2	3
	PC6. To be able to work according to specified shape of Bamboo basket.		5	2	3
	PC7. Check that the materials to be used are free from faults.		5	2	3
	PC8. Conform to company quality standards.		5	2	3
	PC9. Report any damaged work to the responsible person.		5	2	3
	PC10. Leave work area safe and secure when work is complete free from hazards.		5	2	3
	PC11. Take appropriate slivers (based on width & length) for weaving according to shape,size,colour & Design pattern required in making specific basketry		5	2	3



## NSQF QUALIFICATION FILE GUIDANCE

	product.				
	PC12. Do basic weaving in the given structure/frame.		5	2	3
	PC13. Analyze and maintain uniform gap between the slivers as per the given specification.		5	2	3
	PC14. Analyze and maintain compactness of the sliver to ensure rigidity of the structure.		5	2	3
	PC15. Analyze and carry out the bending wherever required according to the shape & size of the product to be achieved.		5	2	3
	PC16. Analyze and maintain quality in giving shapes.		5	2	3
	PC17. Ensure proper handling in making the basketry product to avoid any breakage.		4	2	2
	PC18. Detect faults & defects.		4	2	2
	PC19. Solve & rectify the faults		4	2	2
		<b>TOTAL</b>	<b>100</b>	<b>40</b>	<b>60</b>
3. HCS/N 8713 (Finishing, varnishing, drying & storage of bamboo basket)	PC1. Appropriate usage of clipping tool.	<b>100</b>	5	2	3
	PC2. Cut the extra edges neatly to give the fine finished look.		5	2	3
	PC3. Analyze and apply glue to fix the edges.		5	2	3
	PC4. Handle the Bamboo basket properly to avoid any breakage.		5	2	3
	PC5. Dispose the waste materials in the approved manner.		5	2	3
	PC6. Carry out operations at a rate which maintains workflow.		5	2	3
	PC7. Respond appropriately incase of any errors or faults in the bamboo and other operations.		5	2	3
	PC8. Leave work area safe and secure when work is complete.		5	2	3
	PC9. Maintaining the work place clean.		5	2	3
	PC10. Maintaining sharpness of clipping tool.		5	2	3
	PC11. Take safety precaution while clipping.		5	2	3
	PC12. Carry out effective drying of the basket to reduce moisture content.		3	1	2
	PC13. Take precautions whie placing the baskets in a dust free area while drying.		5	2	3
	PC14. Handle the brush or sprayer		5	2	3

## NSQF QUALIFICATION FILE GUIDANCE

	properly.				
	PC15. Prepare the solution of Varnish by adding an appropriate amount of thinner.		4	1	3
	PC16. Take appropriate amount of solution to be applied on the Bamboo Basketry product.		4	1	3
	PC17. Apply solution on the bamboo basketry product uniformly.		3	1	2
	PC18. Handle the Basket properly while doing varnishing.		3	1	2
	PC19. Ensure uniform and complete drying in sunlight to avoid stickiness.		3	1	2
	PC20. Check & ensure the quality of the final product based on desired specifications.		3	1	2
	PC21. Maintain the workplace clean		3	1	2
	PC22. Dispose the waste materials safely in approved manner.		3	1	2
	PC23. Take precautions while stacking the lot of basket avoiding any breakage		3	1	2
	PC24. Store the lot of basket in a dry area avoiding direct contact with the ground.		3	1	2
		<b>TOTAL</b>	<b>100</b>	<b>37</b>	<b>63</b>
4. HCS/N 8714 (Contribute to achieve quality bamboo basket making)	PC1. Identify and use raw materials as per the specifications provided	<b>100</b>	10	4	6
	PC2. Take the necessary action when materials do not conform to quality standards		10	4	6
	PC3. Report and replace identified faulty materials and component parts which do not meet specification		10	4	6
	PC4. Identify modifiable defects and rework on them		10	4	6
	PC5. Carry out work safely and at a rate which maintains work flow		10	4	6
	PC6. Report to the responsible person when the work flow of other production areas disrupts work		10	4	6
	PC7. Carry out quality checks at specified intervals according to instructions		10	4	6
	PC8. Apply the allowed tolerances		10	4	6
	PC9. Identify faults and take appropriate action for rectification		10	4	6
	PC10. Maintain the required productivity and quality levels		10	4	6
			<b>TOTAL</b>	<b>100</b>	<b>40</b>
	<b>TOTAL</b>	<b>100</b>	<b>29</b>	<b>71</b>	

## NSQF QUALIFICATION FILE GUIDANCE

5. HCS/N9908 (Working in a team)	PC1. Be accountable to one's own role in whole process of developing product	<b>100</b>	12	4	8
	PC2. Perform all roles with full responsibility		10	3	7
	PC3. Be effective and efficient at workplace		10	3	7
	PC4. Properly communicate about organisation's policies		8	4	4
	PC5. Talk politely with other team members and colleagues		10	3	7
	PC6. Adjust in different work situations		10	3	7
	PC7. Give due importance to others' point of view		10	3	7
	PC8. Avoid conflicting situations		10	2	8
	PC9. Develop new ideas for work procedures		8	2	6
	PC10. Improve upon the existing techniques to increase process efficiency		12	2	10
			<b>TOTAL</b>	<b>100</b>	<b>29</b>
6. HCS/N 9912 (Maintain work area and tools)	PC1. Handle materials and tools safely and correctly	<b>100</b>	8	2	6
	PC2. Use materials to minimize waste		10	3	7
	PC3. Maintain a clean and hazard free working area		10	3	7
	PC4. Maintain the tools used for stick making		8	2	6
	PC5. Carry out maintenance and/or cleaning within one's responsibility		10	3	7
	PC6. Report damaged tools and materials		12	4	8
	PC7. Work in a comfortable position with correct posture		10	3	7
	PC8. Dispose of waste safely in designated location		12	4	8
	PC9. Store tools safely after use		10	3	7
	PC10. Carry out cleaning according to schedules and limits of responsibility		10	3	7
			<b>TOTAL</b>	<b>100</b>	<b>30</b>
7. HCS/N 9913 (Maintain health, safety and security at workplace)	PC1. Comply with health and safety related instructions applicable to the workplace	<b>100</b>	8	2	6
	PC2. Use and maintain personal protective equipment as per protocol		8	2	6
	PC3. Carry out own activities in line with approved guidelines and procedures		8	2	6

## NSQF QUALIFICATION FILE GUIDANCE

PC4. Maintain a healthy lifestyle and guard against dependency on intoxicants		8	2	6
PC5. Follow environment management system related procedures		6	2	4
PC6. Store materials and tools in line with manufacturer's and organisational requirements		5	2	3
PC7. Safely handle and move waste and debris		4	1	3
PC8. Minimize health and safety risks to self and others due to own actions		6	2	4
PC9. Seek clarifications from supervisors or other authorized personnel in case of perceived risks		4	1	3
PC10. Monitor the workplace and work processes for potential risks and threats		4	1	3
PC11. Carry out periodic walk-through to keep work area free from hazards and obstructions, if assigned		5	2	3
PC12. Report hazards and potential risks/ threats to supervisors or other authorized personnel		7	3	4
PC13. Participate in mock drills/ evacuation procedures organised at the workplace		5	2	3
PC14. Undertake first aid, fire fighting and emergency response training, if asked		6	2	4
PC15. Take action based on instructions in the event of fire, emergencies or accidents		8	2	6
PC16. Follow organisation evacuation procedures		8	2	6
	<b>TOTAL</b>	<b>100</b>	<b>30</b>	<b>70</b>

## NSQF QUALIFICATION FILE GUIDANCE

### SECTION 2

#### 25. EVIDENCE OF LEVEL

##### OPTION A

Title/Name of qualification/component: Bamboo basket maker		Level: 3	
NSQF Domain	Outcomes of the Qualification/Component	How the outcomes relates to the NSQF level descriptors	NSQF Level
Process	<p>The Bamboo Basket Maker carries out a job which requires limited range of activities which are predictable and carried out in a routine which in this case are around the making of bamboo baskets. The examples for the same include tasks such as</p> <ul style="list-style-type: none"> <li>• carry out preparation of bamboo slivers</li> <li>• carry out weaving &amp; twining of bamboo slivers to achieve the final product requirement size &amp; shape</li> <li>• carry out Finishing, varnishing, drying &amp; storage of bamboo basket</li> </ul>	<ul style="list-style-type: none"> <li>• The Qualification is at level 3 since all work is as per routine and there is no clear choice.</li> </ul>	3
Professional knowledge	<p>The Bamboo Basket Maker needs basic facts, process and principle applied in trade of employment which in this case is bamboo basket making as per specifications.</p> <ul style="list-style-type: none"> <li>• step by step process of making baskets</li> <li>• processes involved in the pre-loom operations</li> </ul>	It is level 3 as the Bamboo Basket Maker needs understanding of making baskets as per required shape/size and to apply the same	3

## NSQF QUALIFICATION FILE GUIDANCE

Title/Name of qualification/component: Bamboo basket maker			Level: 3
NSQF Domain	Outcomes of the Qualification/Component	How the outcomes relates to the NSQF level descriptors	NSQF Level
	<ul style="list-style-type: none"> <li>technique of weaving &amp; twining in the definite pattern &amp; design</li> <li>methods of finishing the bamboo baskets</li> </ul>		
Professional skill	<p>The skills required for the job involve recall and demonstration of practical skill, which is routine and repetitive in narrow range of application.</p> <p>Examples:</p> <ul style="list-style-type: none"> <li>make and choose the appropriate bamboo slivers for the basket as per specifications</li> <li>making two dimensional Bamboo sliver base according to specified design &amp; size on which weaving &amp; twining is to be done</li> </ul>	Factual Knowledge of Field of knowledge of study is not required for this level, therefore It is level 3	3
Core skill	<p>The Bamboo Basket Maker requires communication skills written and oral, with minimum required clarity, skill of basic arithmetic and algebraic principles including understanding of basic financial transactions.</p> <p>These are required for the following tasks:</p> <ul style="list-style-type: none"> <li>analyze &amp; interpret the given design which needs to be made</li> <li>select and check appropriate select and check appropriate bamboo slivers</li> </ul>	Basic oral and written communication is required.	3

## NSQF QUALIFICATION FILE GUIDANCE

Title/Name of qualification/component: Bamboo basket maker			Level: 3
NSQF Domain	Outcomes of the Qualification/Component	How the outcomes relates to the NSQF level descriptors	NSQF Level
	<p>required for making the baskets</p> <ul style="list-style-type: none"> <li>make the two dimensional Bamboo sliver base according to required design &amp; pattern.</li> </ul>		
Responsibility	The Bamboo Basket Maker works largely on instruction from supervisor and laid down procedures. The weaver also has some responsibility for work including for delivery on time and as per schedules standards, but beyond that is not accountable	Given the limited scope of responsibility for own learning and work this is level 3.	3

## NSQF QUALIFICATION FILE GUIDANCE

### SECTION 3 EVIDENCE OF NEED

26	<b>What evidence is there that the qualification is needed? What is the estimated uptake of this qualification and what is the basis of this estimate?</b>		
	<p><b>Basis</b></p> <p><b>Need of the qualification</b></p> <p><b>Industry Relevance</b></p> <p><b>Usage of the qualification</b></p> <p><b>Estimated uptake</b></p>	<p><b>In case of SSC</b></p> <p>While collecting data from the companies for the occupational map, we also took feedback from industry, which was collected with respect to roles for which qualification packs development, was to be prioritized. This was largely based on volume of people required, quantitative and qualitative shortfall which the Industry feels they face. Governing council of HCSSC gave final approval and endorsement for the same.</p> <p>This job role is required in the specific industry and thus is also validated by organizations of the industry – the list of which is attached below</p> <p>It would used for training purposes to skill and up-skill candidates.</p> <p>It is estimated that currently 250,000 Bamboo Basket Maker weavers are engaged; of which the estimated uptake would be 175,000 of this qualification. The numbers</p>	<p><b>In case of other Awarding Bodies (Institutes under Central Ministries and states departments)</b></p>



## NSQF QUALIFICATION FILE GUIDANCE

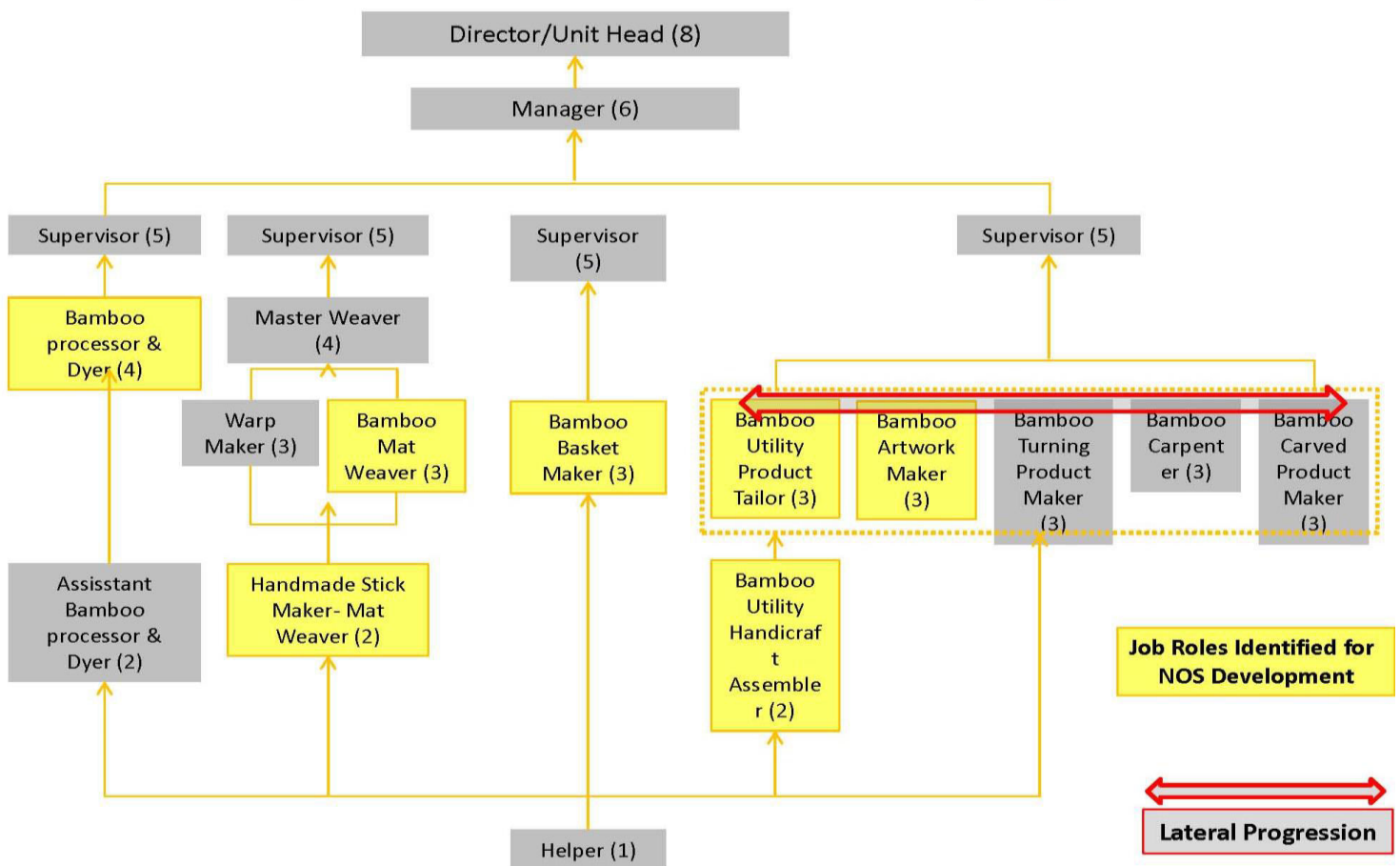
	<p>have been estimated based on industry consultations, analysis of existing reports such as Skills Gap analysis Reports.</p>
27	<p><b>Recommendation from the concerned Line Ministry of the Government/Regulatory Body. To be supported by documentary evidences</b></p> <p>Recommendation received from the office of Development Commissioner (Handicrafts), Ministry of Textiles, Govt. Of India (evidence attached in Annexure 3).</p>
28	<p><b>What steps were taken to ensure that the qualification(s) does (do) not duplicate already existing or planned qualifications in the NSQF? Give justification for presenting a duplicate qualification</b></p> <p>NSDC list of Approved and Under-Development QPs was checked prior to commissioning the work.</p>
29	<p><b>What arrangements are in place to monitor and review the qualification(s)? What data will be used and at what point will the qualification(s) be revised or updated? Specify the review process here</b></p> <ul style="list-style-type: none"> <li>• Agencies have been appointed by the SSC to interact with training providers to gather feedback in implementation.</li> <li>• Monitoring of results of assessments</li> <li>• Employer feedback will be sought post-placement</li> <li>• A formal review is scheduled in two year time i.e. 2020</li> </ul>

**SECTION 4**  
**EVIDENCE OF PROGRESSION**

<b>30</b>	<p><b>What steps have been taken in the design of this or other qualifications to ensure that there is a clear path to other qualifications in this sector?</b></p> <ol style="list-style-type: none"> <li>1. Vertical mobility options have been articulated in the occupational map</li> <li>2. Vertical mobility option is of a Supervisor</li> </ol>
-----------	--

**Career Progression:**

**Bamboo Handicrafts Subsector: Detailed Career progression**



## NSQF QUALIFICATION FILE GUIDANCE

### List of companies validated the QP

S. No	Name of Organisation	Contact Person	Employee Size
1	Tripura Bamboo Mission, Tripura	Mr. V. George Jenner, IFS	Large
2	Tripura Cottage Industries, Tripura	Mr. Manas Debnath	Large
3	Medni crafts Producer Company Ltd, Medinipur (WB)	Mr. Nimesh Kumar Barman	Large
4	Sahaj, Gujarat	Mr. Jabeen Jambhughldawala	Large
5	Benu (Bamboo Enterprises United), Tripura	Mr. Manna Roy	Large
6	Kalika Handicrafts Society, Tripura	Mr. Gauranga Debnath	Large
7	Parivartan, Jharkhand	Mr. Sudeep Saha	Large
8	NRDC, Odisha	Mr. P. K. Mohapatra	Large
9	Contemporary Bamboo Craft Society, Tripura	Mr. Anath Bandhu Sutradhar	Large
10	Gairing Society, Tripura	Mr. Tamash Kangdai	Large
11	Broocklieen, Kerela	Mr. Ashok Kumar. P	Large
12	Umathen Women Weaving and Handicraft Cooperative Society, Manipur	Mrs. M. Ibechoubi Leima	Large
13	Thongjao Rural Upliftment Society, Manipur	Ms. S. Kamala Devi	Large
14	Sristi Crafts & Stores, Tripura	Ms. Nandita Chakraborty	Medium
15	Modern Handicrafts, Tripura	Mr. Manoj Debnath	Medium
16	Mahamaya Handicrafts, Tripura	Mr. Badal Debnath	Medium
17	Chakraborty Handicrafts, Tripura	Mr. Tarun Chakraborty	Medium
18	Natural Weaves & Crafts, Tripura	Ms. Swapna Debnath	Medium
19	Nirmaan Fabrics, Guwahati	Mr. Bapan Sarkar	Medium
20	SHADE, AP	Ms. Sowjanya. P	Medium
21	SHARE, AP	Mr. P. Sudheer Kumar	Medium
22	Orissa Palli Bikash Pratisthan(OPBP), Odisha	Mr. Ojha	Medium
23	Kedar Dhar Industries, Tripura	Mr. Kallol Dhar	Medium
24	MaaKali Handicrafts, Tripura	Mr. Bhajan Sharma	Medium
25	Pioneer Bamboo Craft Society, Tripura	Mr. Bijoy Sutradhar	Medium
26	Women Welfare Society, tripura	Ms. Geeta Chakraborty	Medium
27	Swami Jogananda SHG , Agartala	Mrs. Jyotsna Debnath	Small
28	Creative weaving & Traditional Dresses Unit, Dimapur	Ms Aku Kaurinta Zeliang	Small
29	Art Core, Guwahati	Mr. Peburen Sarmah	Small

## NSQF QUALIFICATION FILE GUIDANCE

30	IndiStore, New Delhi	Ms. Sangeeta Sen	Small
31	Archana Cottage Industries, Tripura	Mr. Prabhod Debnath	Small
32	Bamanchara Nandakirshore Para Craft Producer Group, Tripura	Ms. Chitrita Choudhury	Small
33	Bishwakarama Kalakendra, tripura	Mr. Chunilal Debnath	Small
34	Das Enterprise, Tripura	Mr. Atanu Das	Small
35	Juri Craft Producer Grp, Tripura	Ms. Priyabrata Chabraborty	Small
36	Malancha Craft Producer Grp, Tripura	Ms. Ruma Gope (Barman)	Small
37	Matabari Craft Producer Grp, Tripura	Ms. Suman Sutradhar	Small
38	Rangitilla Craft Producer Grp, Tripura	Mr. Abhijit Sutradhar	Small
39	Sanchay Craft Producer Grp, Tripura	Ms. Mina Rani Das	Small
40	Srijoni, Tripura	Mr. Mithun Dey	Small
41	Uday Craft Producer Grp, Tripura	Ms. Sikha Das	Small
42	Ujjayanta Craft Producer Grp, Tripura	Ms. Purnima Deb(Datta)	Small